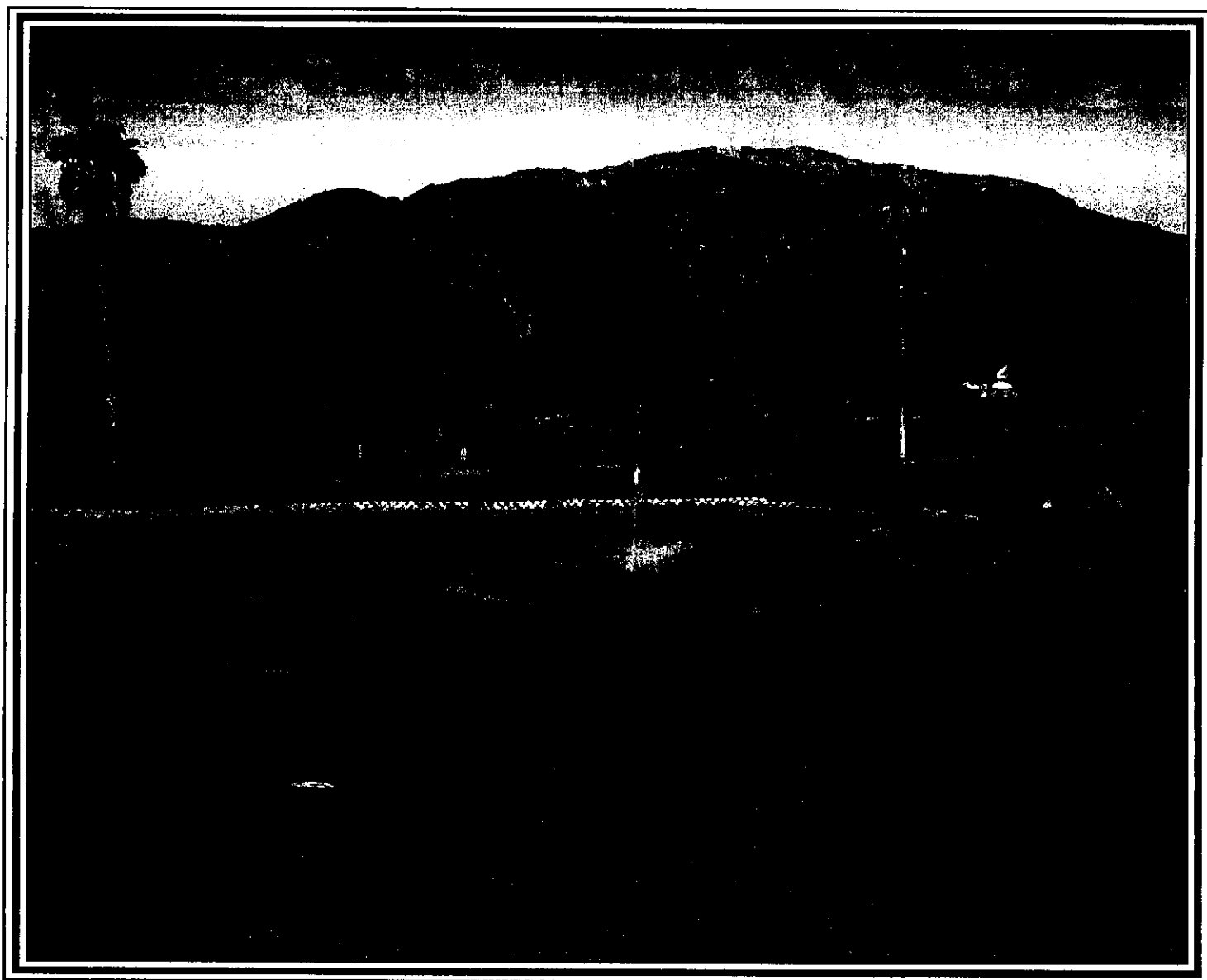


Sierra La Verne COUNTRY CLUB NEWS



February 2012

SLVCC Staff	Men's Association Board Members	Women's Association Board Members
Kelvin NishikawaGeneral Manager Ken ConantPGA Pro Don JohnsonGolf Course Superintendent Mary BottjerPrivate Event Director Dan AbneyExecutive Chef Ivette EspinosaFood & Beverage Manager Allison WannMembership Salesperson	Bob DircksPresident Mel HokansonVice President Ray PlussTreasurer Rod SmithSecretary Mike AllisonTournament Chairman Jim PrustHandicap Chairman George HendersonRules & Greens Chairman	Diane Hays-HoagPresident Diana HechtVice President Darlene CapuanoSecretary Mary GenestTreasurer Nam ChungTournament Chairman Catherine MoHandicap Chairman Kathy ChoiMembership/WSCGA Liaison Connie CareyAdvisor

From the Manager's Desk

Half Price Guest Green Fee Promotion

Beginning on February 1, 2012 and ending on February 29, 2012, we will offer our famous "Half Price Guest Green Fee Promotion". Make sure to make your reservations with our Pro Shop. Also, remember to mention to your Guests our new Membership Sales Promotion of a special \$1000 Initiation Fee to join our Country Club.

Pro Shop Sale is Still Going On!!!

Still looking for gifts for yourself or your loved ones? Remember that the Pro Shop still has Men's and Women's wear for sale. You can't beat the prices on these sales items. Come on in and take advantage of these bargains!

Membership Sales

The special \$1000 Regular Membership Initiation Price is still in effect. Refer a new Member and get Free Dues for yourself! For more details please contact Allison Wann at (909) 596-2100 Ext 10 or at allisonw@sierralavernecc.com.

Sincerely,
Kelvin Nishikawa

Quote of the Month

"The most important shot in golf is the next one."

-Ben Hogan

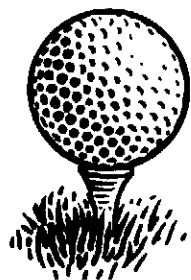


GOLF SHOP NEWS

By Ken Conant

Green And Gold

Green & Gold qualifying starts this month. In this newsletter you should find an entry sheet and we also have them in the golf shop. The first day of qualifying will be Stag Day this month. The format for Stag Day is "individual" and the date is February 15th. You can call the shop and we will sign you up. For our new members this is a Ryder Cup format where we will check your earnings during Men's Club events from February Stag Day through the Club Championship in August. The players that make it get to split up into two teams. The cost is \$35 to try and qualify. We play this event the first part of October. As far as changes we will be returning to the original dates in the beginning of October. We will keep the Blue or White tee option during the event. The main change is we will transfer the dollar amounts you earn into points. The short version explanation of this is it will help the players that only earn "net" money. These players will earn more for finishing 2nd to the last place paid. We will be paying 50% of the field. Currently the Men's Club pays about 25% of the field and the amount earned for places from 2nd to the end will be more. In addition teams with only guests during Stag Day will be removed from payouts and Sierra La Verne players will be moved up to earn those points.



Course Maintenance

First of next month we will "punch and sand" or greens. This is one of two times a year we do this. Keep in mind our Western Hills option if you'd like.

HALF OFF GREEN FEES is back! All of February we will offer ½ off guest green fees. Monday through Thursday fees are down from \$45.00 to **\$22.50** and Friday through Sunday down from \$65.00 to **\$32.50** for walkers.

Presidents Cup

Men's Presidents Cup starts at the end of this month. New for this year is players that sign up after the 32 players from each side (weekday and weekend) we will have a "play in" match against the last few players to sign up from 32, 31, 30 etc... If this is a little confusing just sign up ASAP and you may have to win one less match.



Team Play

Both Saturday and Thursday teams are off to a tough start. It looks like both will need to win away, which is always tough.

Ken and Staff

FREE DUES?

Don't Forget...

If you refer a New Member to Sierra La Verne Country Club and they sign up, you receive **ONE MONTH FREE DUES**

(\$335 Value)

Tell your Friends!

Tell your Family!

Tell your Co-workers!



MEN'S ASSOCIATION

President's Report - *Bob Dircks*

Green & Gold

February is the start of the **Green & Gold** qualify at Sierra La Verne, the first qualify event being the February Stag Day. Qualify runs thru the August Stag Day. Those that Qualify for either team meet in October with 3 days of great golf matches modeled after the Ryder Cup format. This event is truly one of the great golf experiences at Sierra La Verne. Contact Ken Conant and his staff for details.

President's Cup

Presidents Cup—The first of our major tournaments starts March 1st. Sign-up in the Pro Shop. A **Major change** for this year is that play will be limited to the first 32 players for both weekdays and weekend play.

Sign up early. This is a match play laddered tournament. Once play starts check the board in the Pro Shop for the listing of your opponent contact him and be sure you schedule your match within the allotted time frame.

Team Play

Both Thursday and Saturday Team play are off to a good start. Thursday played Canyon Crest losing away 26 to 22 and winning at home 42 to 6. Saturday played Candlewood losing away 36 to 12 and winning at home 36 to 12.



Stag Day

The **February Stag Day** is scheduled for **Wednesday February 15th**. - 12P.M. Shotgun and is an individual event. The sign-up sheet is in the Pro Shop, on the counter next to the posting computer. This is a great opportunity to bring a friend. **Remember you receive a \$10.00 discount on your entry fee for every guest you bring up to a total of 3.** If you are bringing a guest, please write down his GHIN number.

Gentleman management has requested that I inform members/guest that bringing alcohol beverages into the Club is not permitted, especially bottles of wine on Stag Day.

Tournament Schedule

The February **Saturday Tournament** is scheduled for **February 11th**. It is a **2- man best ball format**. Line up your partner and sign up early in the Pro-Shop. Sign-ups are being taken until Wednesday February 8th.

Super Bowl Party

Super Bowl Party February 5th. Starting at 2:30 in the members lounge. Come join your friends for a great buffet and a day of fun and a chance to win a few \$\$\$\$\$. Contact Bob Dircks for details.

Tournament News – *Mike Allison* *Tournament Chairman*

Happy New Year to all of you. I hope this is a year of great golf for each of you.

Thanks to Jim Prust for running an excellent year of tournament golf at Sierra La Verne.

The new golf year started with the January Tournament on Saturday, 1/14. We had a small field (66 players) due in part to team play and to lower membership in the Men's Association. Hootan Kia picked up where he left off last year by winning Low Gross over the Field with a 66. Congratulation to him and the flight winners: Ki Sun Choi, Gary Bean, Wayne Hseih, Don Roden, and Dennis Costantino.

The February Saturday Tournament is scheduled for February 11, and is a 2 man best ball format. So get your partner and sign up in the Pro Shop.

PRESIDENT'S CUP: This is our annual laddered match play tournament. This year, due to a smaller membership, we will start the first round on Weekday and Weekend play with 32 players each side. If we have more than 32 sign up, we will have "play in" matches to determine the 32 player field. So sign up early to insure your spot in the field. Please date your sign up. Sign-ups end on February 19th, and the 1st matches are scheduled for March 3rd.

WOMEN'S ASSOCIATION

President's Report – Diane Hays-Hoag

Hot, Sunny Winter days.....Get ready for **TEAM PLAY**.....

The weather has been absolutely great and team play is approaching fast. We start the season in late March and it's time to start practicing and honing your skills. Connie is working on putting our schedule together along with our practice rounds with the other 3 teams in our Division. Once the schedule is set it will be posted in the locker room. Remember the three teams we will be competing against are: South Hills, Hacienda Heights and Friendly Hills. It's nice to know that we only have to travel very short distances this year to play our matches.

Stay tuned for more details to follow.

Important: If you are playing and have not yet signed up, please make sure that you check your name off on the sheet in the locker room or contact Connie Carey or Elinor Kang. Also, we need your shirt size so they can be ordered in time for the start of the season. Please make sure that you record your size on the sheet.

Circle Shoot

A new year is approaching so I have to start it off with....Don't forget to sign up for Circle Shoot.

As always, the sign-up sheets are on the bulletin board in the locker room. Or you can call Dolores

Dircks and she will gladly put you in for a time that will accommodate your schedule.

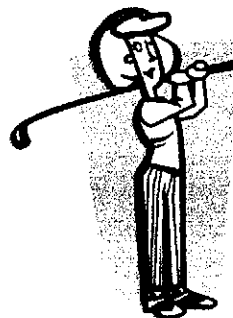
As you know, our membership is down, so we really need your help. Each one of us will need to

participate more than the usual 1 or 2 times, given that we've lost ladies who normally would have

taken spots. I think that you all realize that we can't afford not to do Circle Shoot since it really

offsets so many costs in our yearly budget.

You know that we appreciate your help!!



GUEST DAY NEWS

The January Guest Day has been cancelled for lack of participation.

March is our next scheduled Guest Day and has always been one of our most popular tournaments. Diana Hecht is working with Ken to schedule a date while working around greens being punched, Men's Stag Day and outside tournaments. It will be sometime in mid to late March. We will notify you as soon as we have a confirmed date. The last several years this tournament has been our St. Paddy's Day Tournament and topped 70+ players.

Keep your eyes and ears open for details within the next week.

TEE TIMES

As a reminder, our tee times on Tuesday Play start at 8:02 and our Low Gross, Low Net Tournament on the first of the month is an 8:30 shotgun.

UPCOMING EVENTS

General Meeting:
March 6th, May 1st

Board Meeting:
February 21st, April 17th

Saturday Ladies' Tournaments:
February 4th, March 3rd

TOURNAMENT RESULTS

SATURDAY TOURNAMENT 2012

Round OverAll

01/14/12

* = Overall

Net

<u>Flight A</u>	<u>Name</u>	<u>Finish</u>	<u>Score</u>	<u>Award</u>
	Choi, Ki Sun	1	69	\$169.00
	Hokanson, Mel	2	72	\$ 89.00
	Nam, Keeso	3	73	\$ 69.00
	Ware, Bob	3	73	\$ 69.00
	Domenici, Henry	5	74	\$ 24.00
	Kim, John J	5	74	\$ 24.00
<u>Flight B</u>	<u>Name</u>	<u>Finish</u>	<u>Score</u>	<u>Award</u>
	Bean, Gary S	1	71	\$111.00
	Hsieh, Wayne	1	71	\$111.00
	Roden, Donald E	1	71	\$111.00
	Lee, Michael	4	72	\$ 62.00
	Chung, Paul Yun	5	74	\$ 24.00
	Kim, Haisung	5	74	\$ 24.00
<u>Flight C</u>	<u>Name</u>	<u>Finish</u>	<u>Score</u>	<u>Award</u>
	Constantino, Dennis	1	69	\$169.00
	Crumbraker, Eric	2	71	\$ 89.00
	Allison G Michael	3	72	\$ 69.00
	Shapiro, Neal	3	72	\$ 69.00
	Dalton, Ron	5	73	\$ 24.00
	Johnson, Michael	5	73	\$ 24.00

Round 1

* = Overall

Gross

<u>Flight</u>	<u>Name</u>	<u>Finish</u>	<u>Score</u>	<u>Award</u>
	Kia, Hootan	1	76	\$169.00

DINNING**Birthday Celebration**

Sunday, February 4th, &
Sunday, February 18th.

Complimentary Prime Rib Dinner for any Member or Spouse (not children) whose
Birthday is in February. Birthday Sunday Dining will take place in our Members
Grill from 5.00PM to 8.00PM

By Reservation Only

(909) 596-2100 Ext. 13

Thursday and Friday Family Night Specials

(Members Grill 5.00PM to 8.00PM)

February 2nd & 3rd, Sea Bass

February 9th & 10th, Hawaiian Chicken Stir Fry

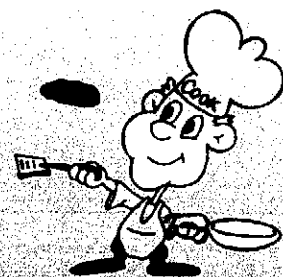
February 16th & 17th, Champagne Chicken

February 23rd & 24th, Sandabs

March 1st & 2nd, London Broil

\$14.95 • Dine In Only

Special Includes. Soup or Salad, the Special Entrée and Delicious Desserts



SUNDAY	MONDAY	TUESDAY	WEDNESDAY	THURSDAY	FRIDAY	SATURDAY
			1 Happy Hour 3:00-6:00 Range Closes at 4:00	2 Range Opens at 10:00am Happy Hour 3:00-6:00 Thursday Special in Member Grill	3 Friday Special in Members Grill	4 Women's Association 8:54 Tee Times 16 36 Team Play 10:00 Shotgun
5	6 Course Opens at 9:00am Happy Monday Buffet 5:00-8:00 U.L.V 12:30 Tee Times 10	7 Women's Association 32 8:30am Shotgun Happy Hour 3:00-6:00	8 Happy Hour 3:00-6:00 Range Closes at 4:00	9 Range Opens at 10:00am 60 U.L.V 11:00 Tee Times Happy Hour 3:00-6:00 Thursday Special in Members Grill	10 Friday Special in Members Grill	11 Men's Club Tournament 6:30 T-Times 100
12 Birthday Sunday	13 Course Opens at 9:00am Happy Monday Buffet 5:00-8:00	14 Women's Association 32 8:00am Tee Times Happy Hour 3:00-6:00 U.L.V 12:30 Tee Times 10	15 Happy Hour 3:00-6:00 Stag Day 11:00 Shotgun 78 Range Closes at 4:00	16 Range Opens at 10:00am 36 Team Play 10:00 Shotgun Happy Hour 3:00-6:00 Thursday Special in Members Grill	17 Friday Special in Members Grill	18 36 Team Play 10:00 Shotgun
19 Sunday Couples 8:30am Tee Times 24	20 Course Opens at 6:18am [HOLIDAY] Happy Monday Buffet 5:00-8:00	21 Women's Association 36 8:00am Tee Times Happy Hour 3:00-6:00 U.L.V 12:30 Tee Times 10	22 Happy Hour 3:00-6:00 Range Closes at 4:00	23 Range Opens at 10:00am Happy Hour 3:00-6:00 Thursday Special in Members Grill	24 Friday Special in Members Grill	25
26 Birthday Sunday	27 Course Opens at 9:00am Happy Monday Buffet 5:00-8:00 36 Boeing 9:00 Tee Times U.L.V 12:30 Tee Times 10	28 Women's Association 32 8:00am T-Times Happy Hour 3:00-6:00				

MARCH 2012

COUNTRY CLUB NEWS

SUNDAY	MONDAY	TUESDAY	WEDNESDAY	THURSDAY	FRIDAY	SATURDAY
				1 Range Opens at 10:00am U.L.V 12:30 Tee Times 10	2 Friday Special in Members Grill	3 Women's Association 8:54 Tee Times 16
4 Birthday Sunday	5 Course Opens at 9:00am Higashi 8:15 Shotgun 72 Happy Monday Buffet 5:00-8:00	6 Women's Assoc. 36 8:00am Tee Times Happy Hour 3:00-6:00 U.L.V 12:30 Tee Times 10	7 U.L.V 12:30 Tee Times 10 Happy Hour 3:00-6:00 Range Closes at 4:00	8 Range Opens at 10:00am Happy Hour 3:00-6:00 Thursday Special in Members grill	9 Friday Special in Members Grill	10 Men's Club Tournament 6:30 T-Times 110
11	12 Course Opens at 9:00am/Happy Monday Buffet 5:00-8:00 U.L.V 12:30 Tee Times 10	13 Women's Association 36 8:00am Tee Times Happy Hour 3:00-6:00	14 Happy Hour 3:00-6:00 Range Closes at 4:00 U.L.V 12:30 Tee Times 10	15 Range Opens at 10:00am 36 Team Play 10:00 Shotgun Happy Hour 3:00-6:00	16 Friday Special in Members Grill	17
18 Birthday Sunday Sunday Couples 8:30am Tee Times 24	19 Course Opens at 9:00am Happy Monday Buffet 5:00-8:00	20 Women's Association 36 8:00am Tee Times Happy Hour 3:00-6:00	21 U.L.V 12:30 Tee Times 10 Happy Hour 3:00-6:00/Range Closes at 4:00/Stag Day 11:00 Shotgun 80	22 Range Opens at 10:00am 36 Team Play 10:00 Shotgun Happy Hour 3:00-6:00	23 Friday Special in Members Grill	24
25	26 Course Opens at 9:00am Happy Monday Buffet 5:00-8:00	27 Women's Association 36 8:00am T-Times U.L.V 12:30 Tee Times	28 U.L.V 12:30 Tee Times 10 Range Closes at 4:00	29 Range Opens at 10:00am U.L.V 12:30 Tee Times 10	30	31